

# AKORLARI YAZMA

*M6*

*M7b5*

*M7#5*

*Madd9*

*M9*

*M6/9*

*M7#11*

The image displays a musical score for guitar chords. It consists of 12 staves, each representing a different chord. The chords are: M6, M7b5, M7#5, Madd9, M9, M6/9, and M7#11. Each staff shows the chord's structure on a six-line staff with a treble clef and a key signature of one flat (Bb). The notes are: M6 (F, A, C), M7b5 (F, Ab, C), M7#5 (F, Ab, C, Eb), Madd9 (F, Ab, C, Eb, G), M9 (F, Ab, C, Eb, G, Bb), M6/9 (F, Ab, C, Eb, G, Bb), and M7#11 (F, Ab, C, Eb, G, Bb, D#).

*m6*

*m(Maj7)*

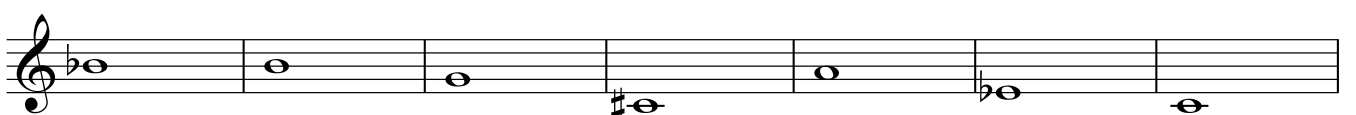
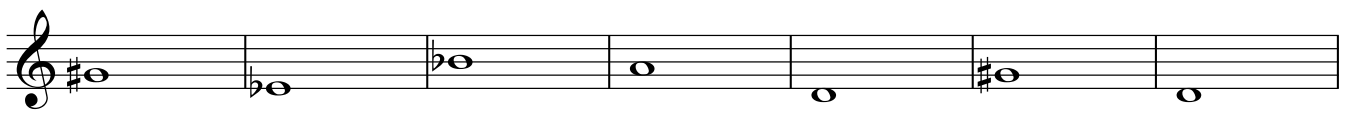
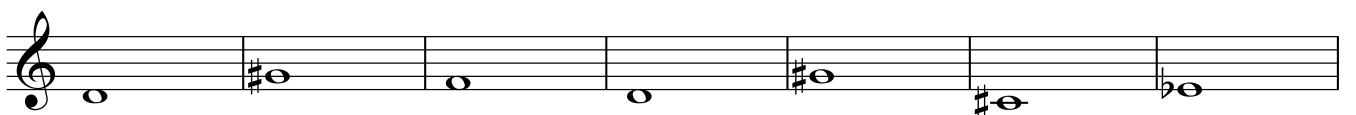
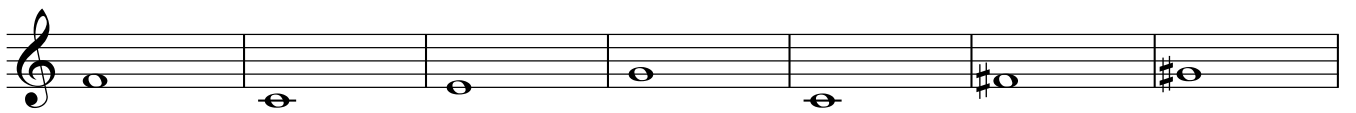
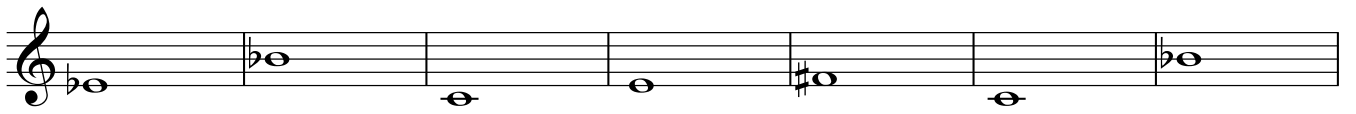
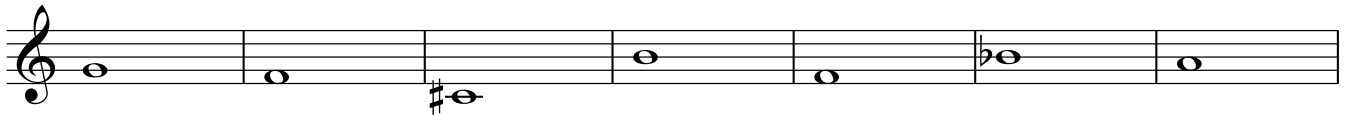
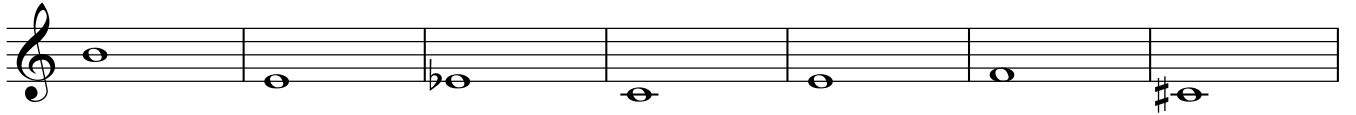
*m7*

*m9*

*m11*

*m7b5*

*dim7*



*7sus4**7b5**7#5**7 9**7#9**7b9**7#11*